

CENTRIFUGAL PUMPS

ENGINE DRIVEN PUMPS



FACGF & FNG-23V SERIES

Our centrifugal gas engine pumps can be used in mining, irrigation, construction and other heavy duty applications.

Features:

- Briggs & Stratton or Honda engine integrated engine
- Cast iron impeller for maximum efficiency
- Up to 23 hp



FBSGF & FNSGF SERIES

These heavy-duty, gas engine, self-priming pumps are an ideal choice for water transfer applications and temporary irrigation.

Features:

- Equipped with Kohler, Briggs & Stratton or Honda engine
- Max working pressure of 120 psi while heading up to 185 feet



FMIG SERIES

This series is ideal for where flows of up to 300 gpm and 50–60 psi are required.

Features:

- Supplied with a Honda or Kohler engine
- Includes a built-in check valve to facilitate priming



CENTRIFUGAL PUMPS

ENGINE DRIVEN PUMPS



FACGF & FNG ENGINE DRIVEN CENTRIFUGAL.....	3
Features.....	3
Performance.....	4
Ordering Information.....	4
Dimensions.....	6
FBSGF SELF-PRIMING ENGINE DRIVEN CENTRIFUGAL.....	8
Features.....	8
Performance.....	9
Ordering Information.....	9
Dimensions.....	10
FNSGF SELF-PRIMING ENGINE DRIVEN CENTRIFUGAL.....	11
Features.....	11
Performance.....	12
Ordering Information.....	12
Dimensions.....	13
FMIG SELF-PRIMING ENGINE DRIVEN CENTRIFUGAL	14
Features.....	14
Performance.....	15
Ordering Information.....	15
Dimensions.....	16
MATERIALS AND PARTS.....	17

CENTRIFUGAL PUMPS

FACGF & FNG ENGINE DRIVEN CENTRIFUGAL



FEATURES

- Volute: Rugged, cast iron construction with tapped openings for venting and draining
- Impeller: Enclosed cast iron for higher pressure applications
- Mechanical Seal: Standard carbon/ceramic faces, FKM elastomers, 300 series stainless steel components
- Engine: Industry-recognized Briggs & Stratton, Honda, or Kohler, equipped with adjustable throttle controls
- Mounting: Horizontal position



SPECIFICATIONS

- Capacities to 400 gpm
- Heads to 275 feet
- Clockwise rotation when viewed from motor end
- NPT pipe connections
- FACGF, 150 psi max working pressure, 200 °F max temperature
- FNG-23V, 125 psi max working pressure, 212 °F max temperature

APPLICATIONS

- Water Truck
- Irrigation
- Commercial
- Construction
- Municipal
- General Services

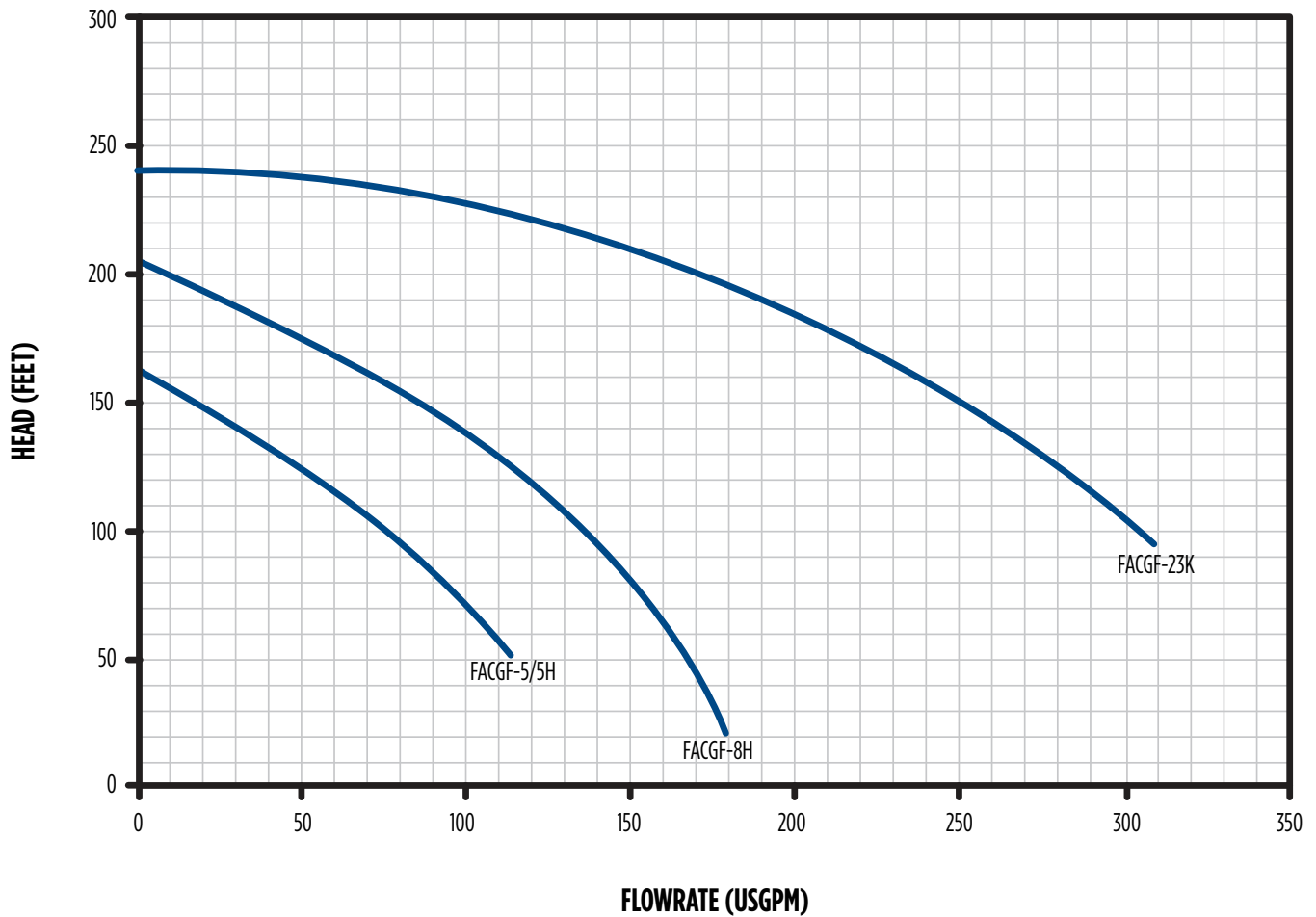
CENTRIFUGAL PUMPS

FACGF ENGINE DRIVEN CENTRIFUGAL



PERFORMANCE

FACGF



ORDERING INFORMATION

Model	Order No.	Suc. / Dis. (NPT)	Engine CC	Engine Description	Low Oil Shut-Off	Wt. (lbs)
FACGF-5	90261005	2" x 2"	205	Briggs & Stratton INTEK, with 3 qt. fuel tank	NO	62
FACGF-5H	90261105	2" x 2"	160	Honda, with 4 qt. fuel tank	YES	62
FACGF-8H	90261108	2" x 2"	270	Honda, with 6 qt. fuel tank	YES	82
FACGF-23K	90261323*	2-1/2" x 2-1/2"	725	Kohler CH730, electric start	YES	275

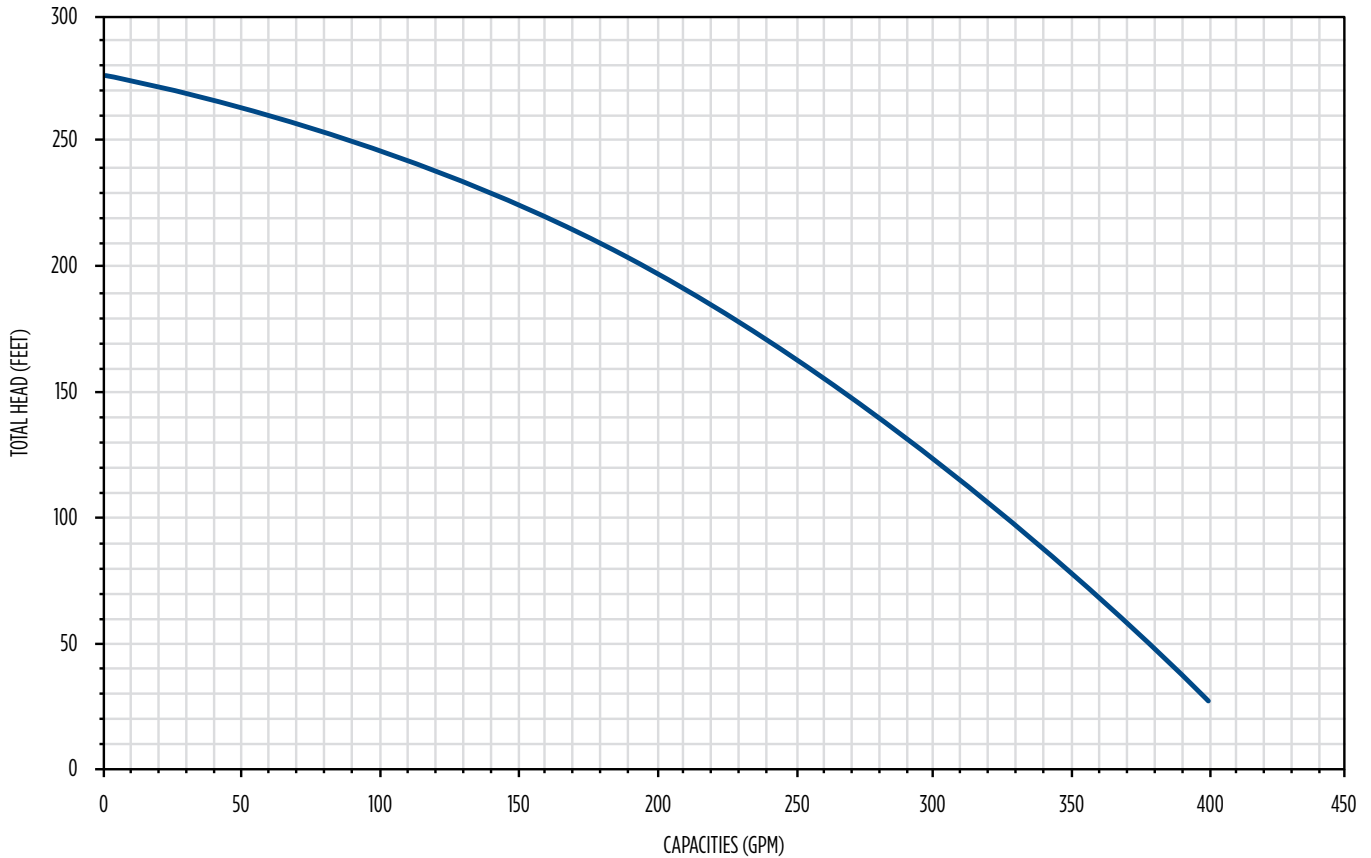
* Battery, fuel tank, and cables not included.

CENTRIFUGAL PUMPS

FNG - 23V ENGINE DRIVEN CENTRIFUGAL



PERFORMANCE



ORDERING INFORMATION

Model	Order No.	Suc. / Dis. (NPT)	Engine CC	Engine Description	Low Oil Shut-Off	Wt. (lbs)
FNG-23VM	90261223*	3" x 2-1/2"	623	B&S-Vanguard V-Twin, electric start	Low Oil Alert**	206

* Battery, fuel tank, and cables not included

**Oil pressure switch installed for low oil warning light (warning light not included)

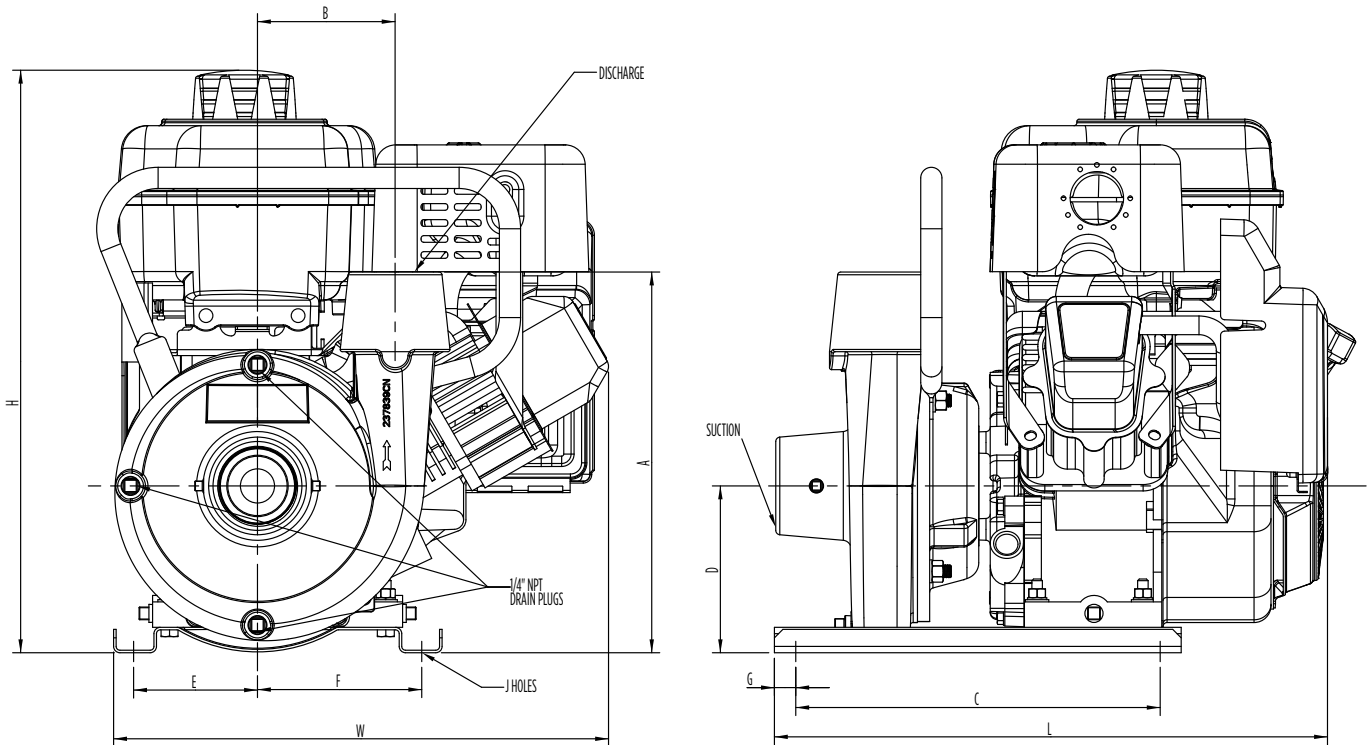
CENTRIFUGAL PUMPS

FACGF ENGINE DRIVEN CENTRIFUGAL



DIMENSIONS

FACGF-5/5H, 8H



Model	Suc. / Dis. (NPT)	A	B	C	D	E	F	G	H	J Holes	L	W
FACGF-5	2 x 2	11.23	4.06	10.75	4.93	3.65	4.85	.063	17.18	.041	16.32	14.60
FACGF-5H		11.23	4.06	10.75	4.93	3.65	4.85	.063	13.92	.041	16.35	15.60
FACGF-8H		12.68	4.06	13.50	6.37	5.87	6.38	1.75	17.71	.041	19.30	17.43

NOTE: Dimensions are for estimating purposes only. All dimensions in inches.

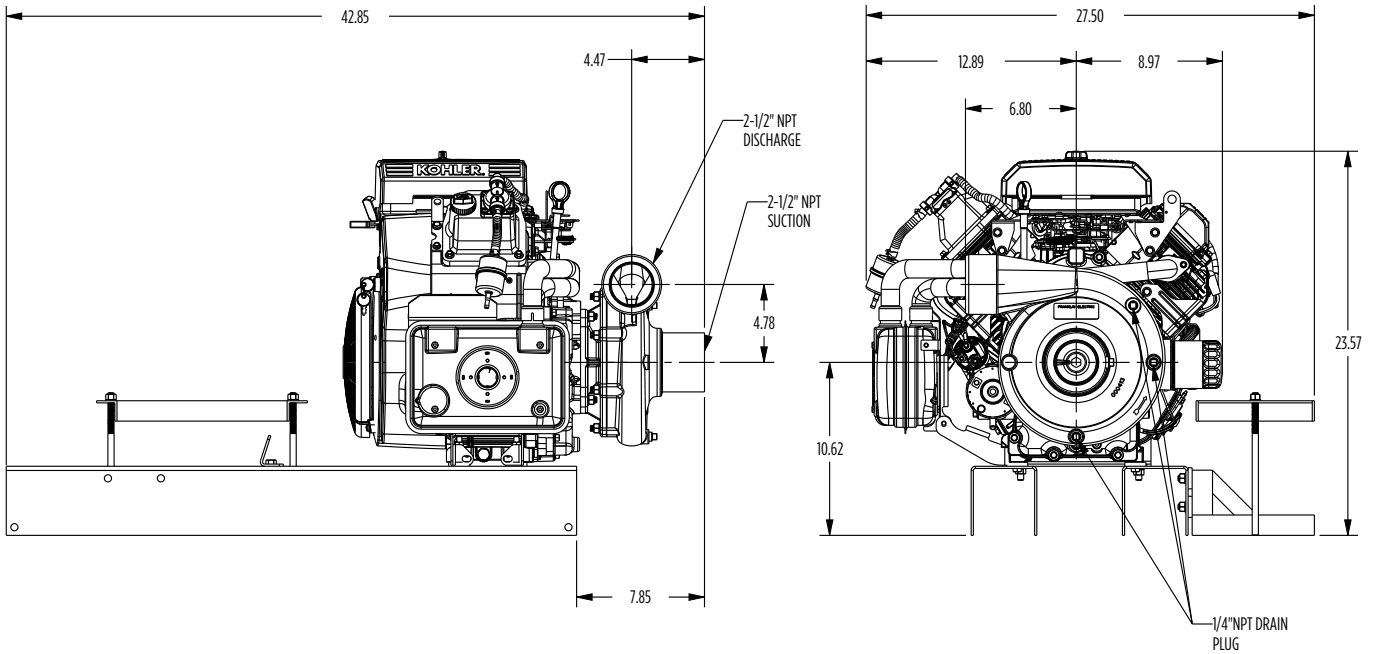
CENTRIFUGAL PUMPS

FACGF & FNG ENGINE DRIVEN CENTRIFUGAL



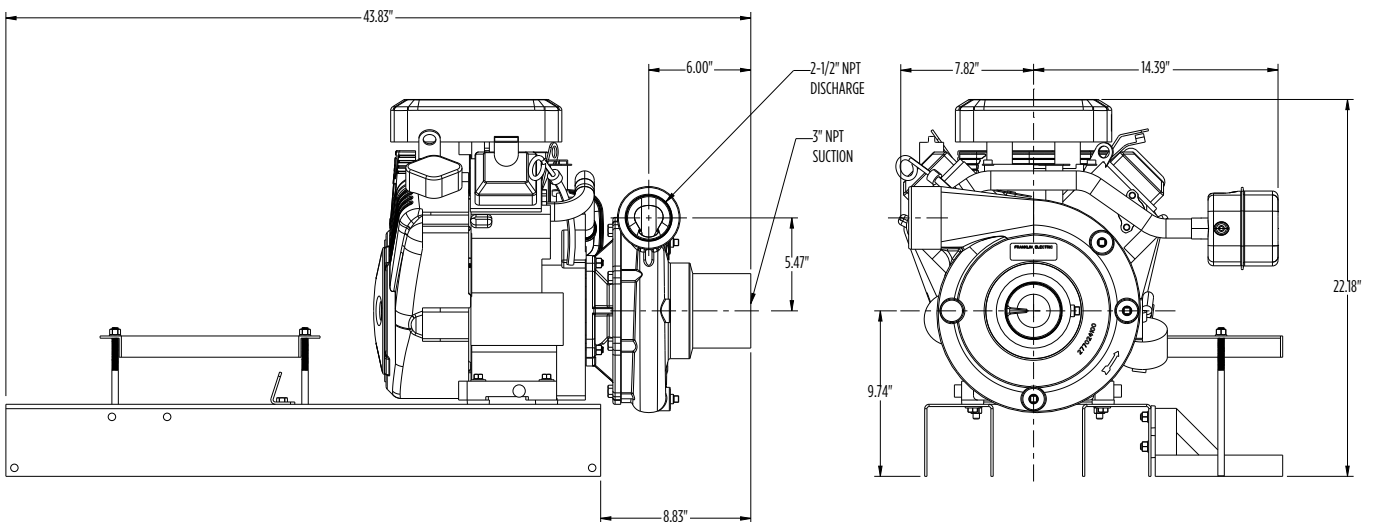
DIMENSIONS

FACGF-23K



DIMENSIONS

FNG-23V



NOTE: Dimensions are for estimating purposes only. All dimensions in inches.

CENTRIFUGAL PUMPS

FBSGF SELF-PRIMING ENGINE DRIVEN CENTRIFUGAL



FEATURES

- Volute: Cast iron rugged construction with tapped openings for priming, venting and draining.
- Impeller: Semi-open cast iron with “blind hole” for engine shaft protection.
- Mechanical Seal: Standard carbon/ceramic faces, FKM elastomers, 300 series stainless components.
- Engine: Industry recognized Briggs & Stratton, or Honda equipped with adjustable throttle controls.
- Mounting: Horizontal position.



SPECIFICATIONS

- Capacities to 298 gpm
- Heads to 112 feet
- 120 psi max working pressure
- 200 °F maximum temperature
- Clockwise rotation when viewed from engine side
- NPT pipe connections

APPLICATIONS

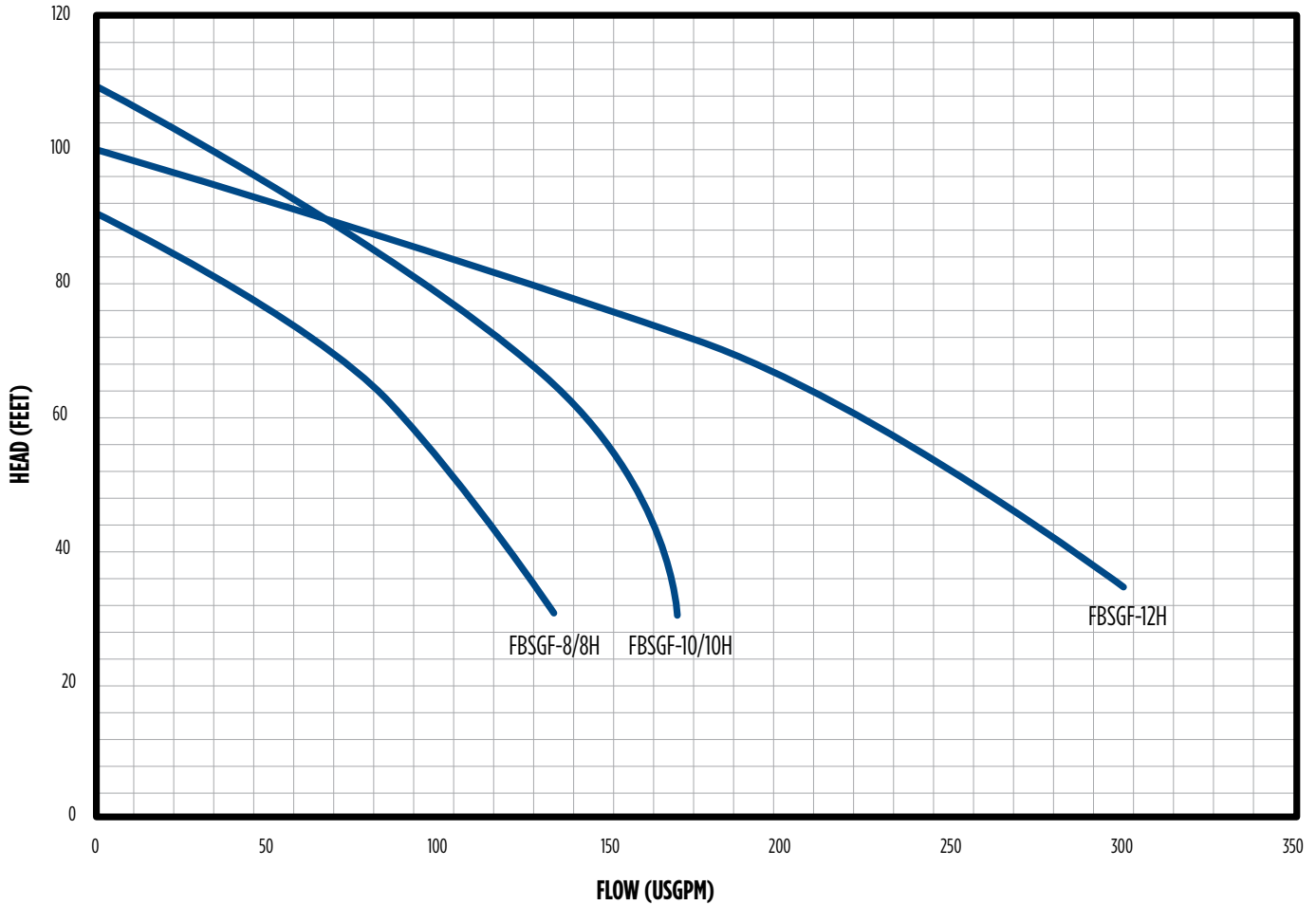
- Irrigation
- Construction
- Mining
- Commercial
- Municipal
- Light Industrial

CENTRIFUGAL PUMPS

FBSGF SELF-PRIMING ENGINE DRIVEN CENTRIFUGAL



PERFORMANCE



Model	Performance Chart							
	Total Head in Feet							
	30	40	50	60	70	80	90	100
	Capacities in U.S. GPM							
FBSGF-8	135	120	105	85	65	37	-	-
FBSGF-10	170	165	155	140	118	95	65	30
FBSGF-12H	310	285	255	220	175	120	60	-

ORDERING INFORMATION

Model	Order No.	Suc. / Dis. (NPT)	Engine CC	Engine Description	Low Oil Shut-Off	Wt. (lbs)
FBSGF-8	90271008	2" x 2"	127	Briggs & Stratton, with 3 qt. fuel tank	No	65
FBSGF-8H	90271108	2" x 2"	118	Honda, with 3 qt. fuel tank	Yes	65
FBSGF-10	90271010	2" x 2"	205	Briggs & Stratton INTEK, with 3 qt. fuel tank	No	74
FBSGF-10H	90271110	2" x 2"	160	Honda, with 4 qt. fuel tank	No	74
FBSGF-12H	90271112	3" x 3"	270	Honda, with 6 qt. fuel tank	Yes	110

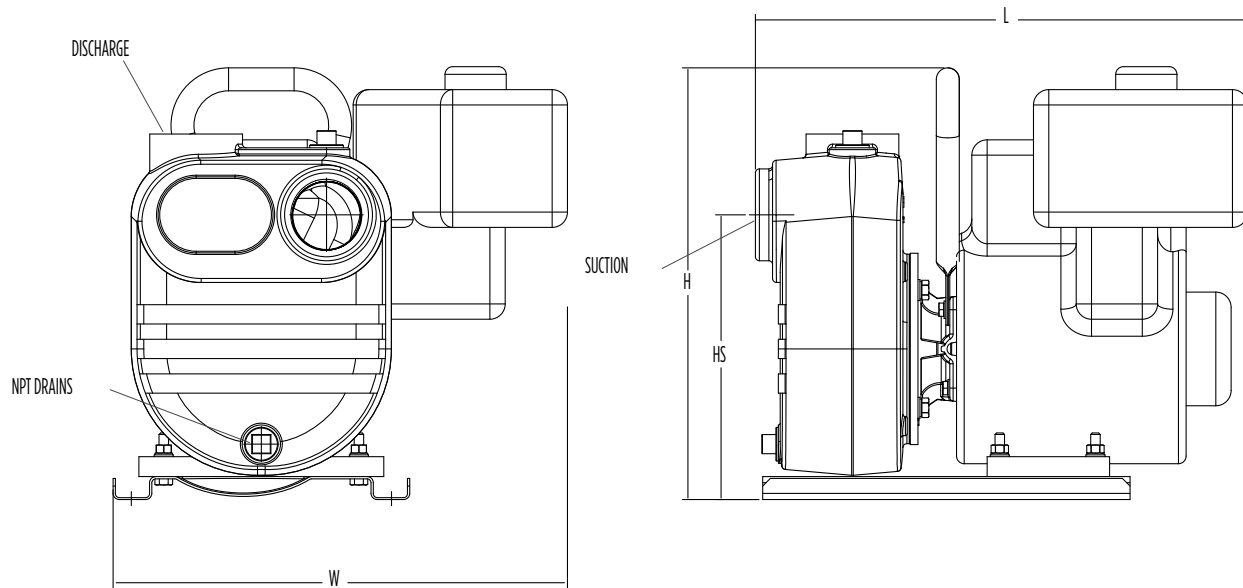
Recoil start on all models

CENTRIFUGAL PUMPS

FBSGF SELF-PRIMING ENGINE DRIVEN CENTRIFUGAL



DIMENSIONS



Model	Suction	Discharge	L	W	H	HS
FBSGF-8	2	2	15.25	13.25	14.00	9.25
FBSGF-8H	2	2	16.16	13.25	14.10	9.27
FBSGF-10	2	2	16.69	15.75	16.00	9.25
FBSGF-10H	2	2	16.43	13.01	13.87	9.27
FBSGF-12H	3	3	21.19	18.50	16.60	11.04

NOTE: Dimensions are for estimating purposes only. All dimensions in inches.

CENTRIFUGAL PUMPS

FNSGF SELF-PRIMING ENGINE DRIVEN CENTRIFUGAL



FEATURES

- Volute: Rugged cast iron rugged construction with tapped openings for priming, venting and draining
- Impeller: Enclosed; cast iron for higher pressure applications
- Mechanical Seal: Standard carbon/ceramic faces, FKM elastomers, and 300 series stainless components
- Engine: Industry-recognized Honda equipped with adjustable throttle controls
- Mounting: Horizontal



SPECIFICATIONS

- Capacities to 165 gpm
- Heads to 185 feet
- 120 psi maximum working pressure
- 200 °F maximum temperature
- Clockwise rotation when viewed from motor end
- NPT pipe connections

APPLICATIONS

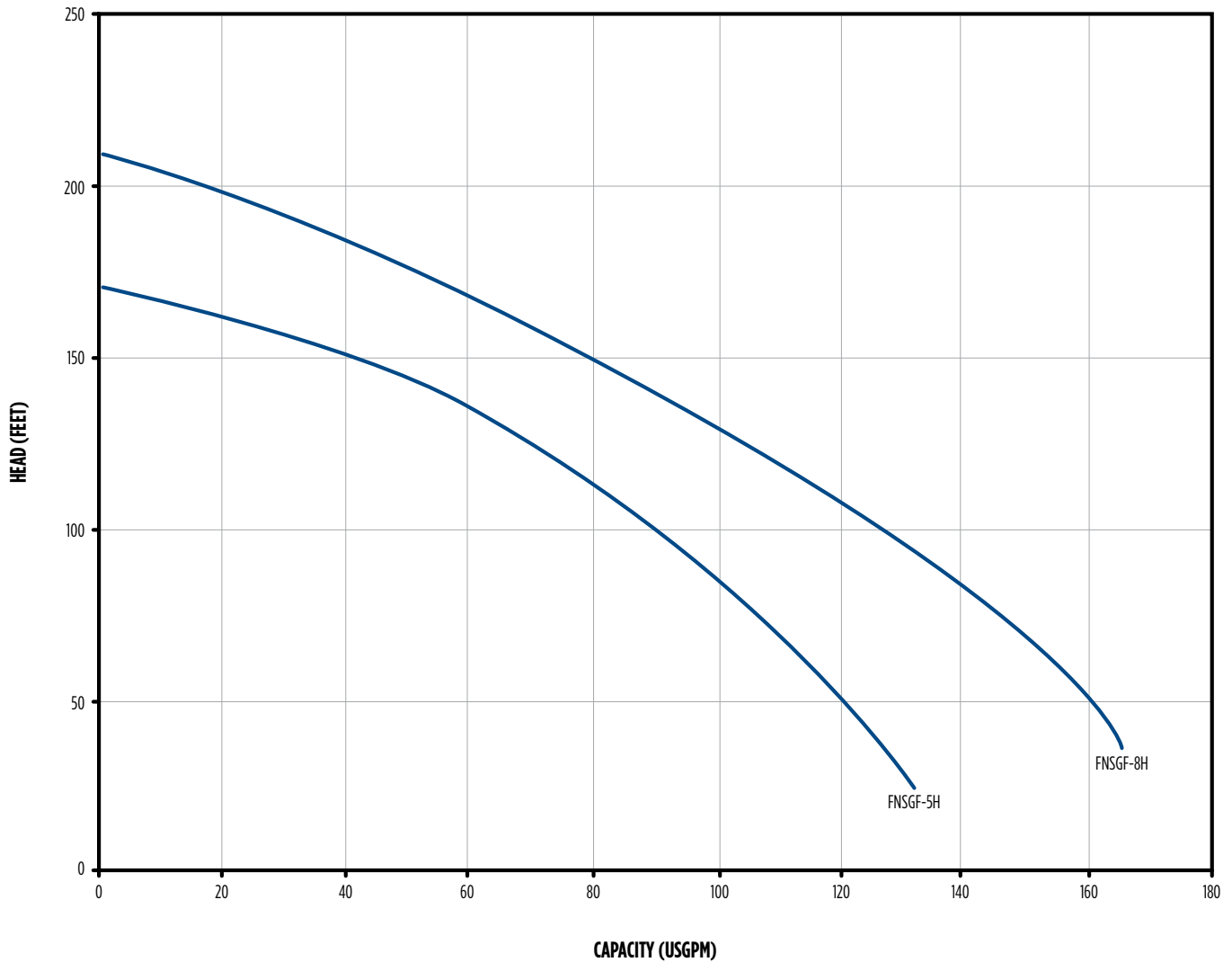
- Irrigation
- Construction
- Mining
- Commercial
- Municipal
- Light Industrial

CENTRIFUGAL PUMPS

FNSGF SELF-PRIMING ENGINE DRIVEN CENTRIFUGAL



PERFORMANCE



Model	Discharge Pressure in PSI @ 5' Lift							
	10	20	30	40	50	60	70	80
	Capacities in U.S. GPM							
FNSGF-5H	132	115	106	85	70	52	-	-
FNSGF-8H	165	162	145	125	110	85	50	30

ORDERING INFORMATION

Model	Order No.	Suc. / Dis. (NPT)	Engine CC	Engine Description	Low Oil Shut-Off	Wt. (lbs)
FNSGF-5H	90272105	2" x 2"	160	Honda, with 4 qt. fuel tank	Yes	94
FNSGF-8H	90272108	2-1/2" x 2"	270	Honda, with 4 qt. fuel tank	Yes	118

CENTRIFUGAL PUMPS

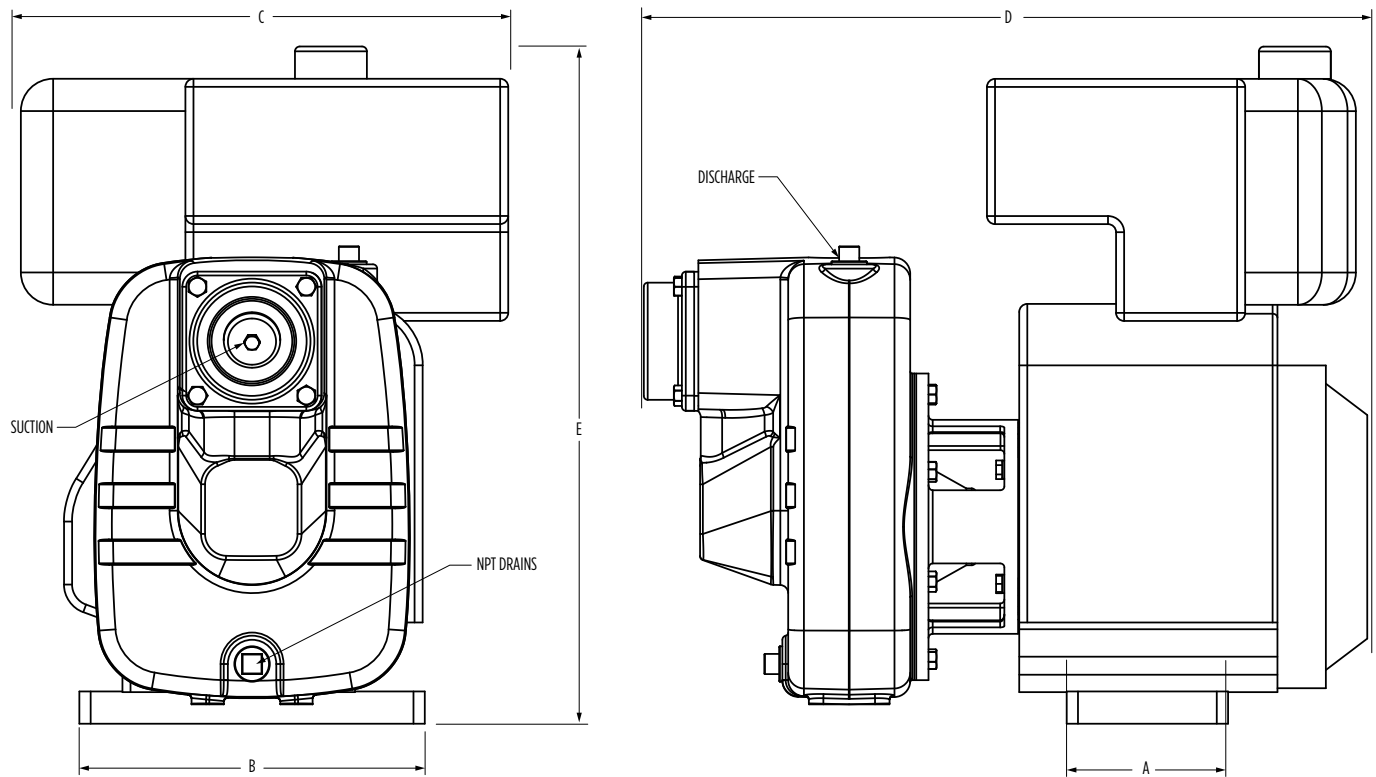
FNSGF SELF-PRIMING ENGINE DRIVEN CENTRIFUGAL



DIMENSIONS

Model	Pump Size (Dis. x Suc.)	Dimensions (in)				
		A	B	C	D	E
FNSGF-5H	2 x 2	9.75	13.5	16.20	20.25	14.38
FNSGF-8H	2 x 2.5	13	17	17.31	23.66	17.75

NOTE: Dimensions are for estimating purposes only



CENTRIFUGAL PUMPS

FMIG SELF-PRIMING ENGINE DRIVEN CENTRIFUGAL



FEATURES

- Volute: Cast-gray iron rugged construction; self-priming with priming and drain plugs; removable front cover features a built in check valve to facilitate priming
- Impeller: Semi open cast iron, non-clogging, designed for water but can also handle small quantities of mud, sand, or silt up to 10% by volume; replaceable steel wear plate for maintaining maximum pump efficiency
- Mechanical Seal: Standard carbon/ceramic faces, FKM elastomers, 300-series stainless steel components
- Engine: Industry-recognized Honda or Kohler
- Mounting: Horizontal position



SPECIFICATIONS

- Capacities to 400 gpm
- Heads to 160 feet
- 120 psi max working pressure
- 212 °F maximum temperature
- Clockwise rotation when viewed from engine side
- NPT pipe connections

APPLICATIONS

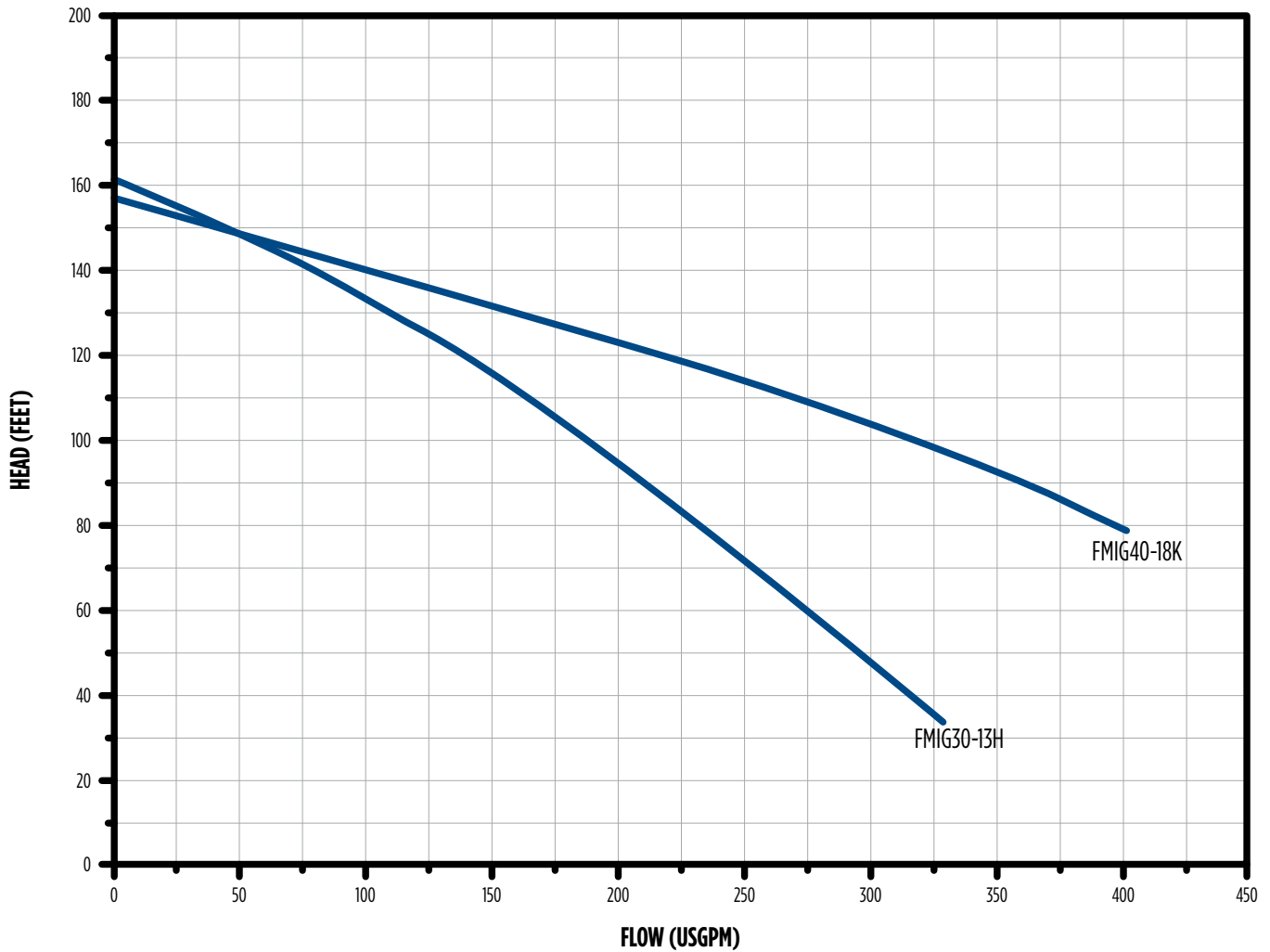
- Irrigation
- Construction
- Mining
- Commercial
- Municipal
- Light Industrial

CENTRIFUGAL PUMPS

FMIG SELF-PRIMING ENGINE DRIVEN CENTRIFUGAL



PERFORMANCE



ORDERING INFORMATION

Model	Order No.	Suc. / Dis. (NPT)	Engine CC	Engine Description	Start	Low Oil Shut-Off	Wt. (lbs)
FMIG30-13H	90281113	3" x 3"	289	Honda with 6.9 qt. fuel tank	Recoil	Yes	270
*FMIG40-18K	90281218	4" x 4"	674	Kohler V-Twin CH620	Electric	Yes	118

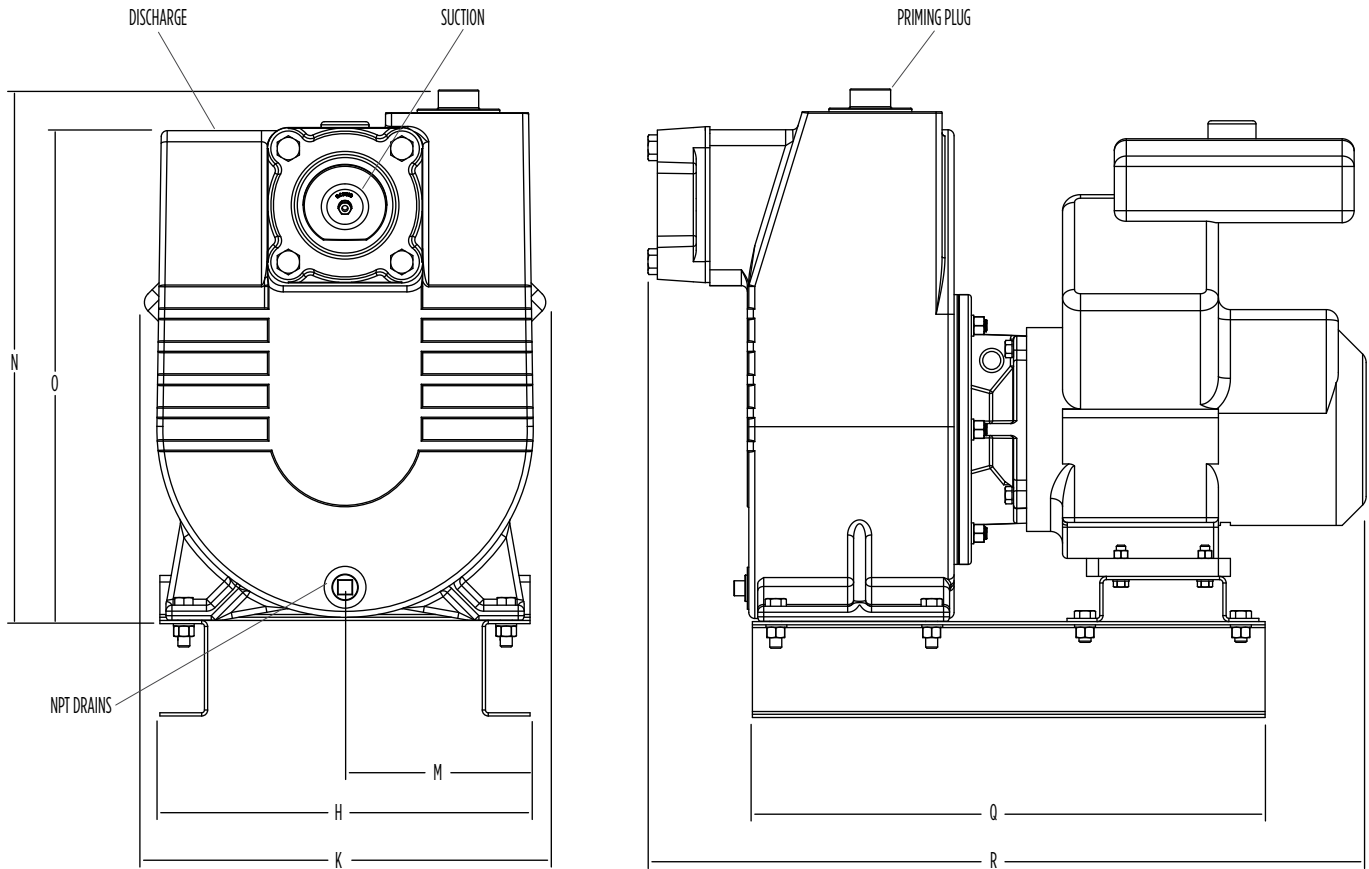
*Fuel tank, battery, and cables not included

CENTRIFUGAL PUMPS

FMIG SELF-PRIMING ENGINE DRIVEN CENTRIFUGAL



DIMENSIONS



Model	H	K	M	N	O	Q	R
FMIG30-13H	12.75	17.25	11.50	17.50	15.85	N/A	24.60
FMIG40-18K	15.50	17.74	8.87	28.25	26.31	21.37	29.95

NOTE: Dimensions are for estimating purposes only. All dimensions in inches.

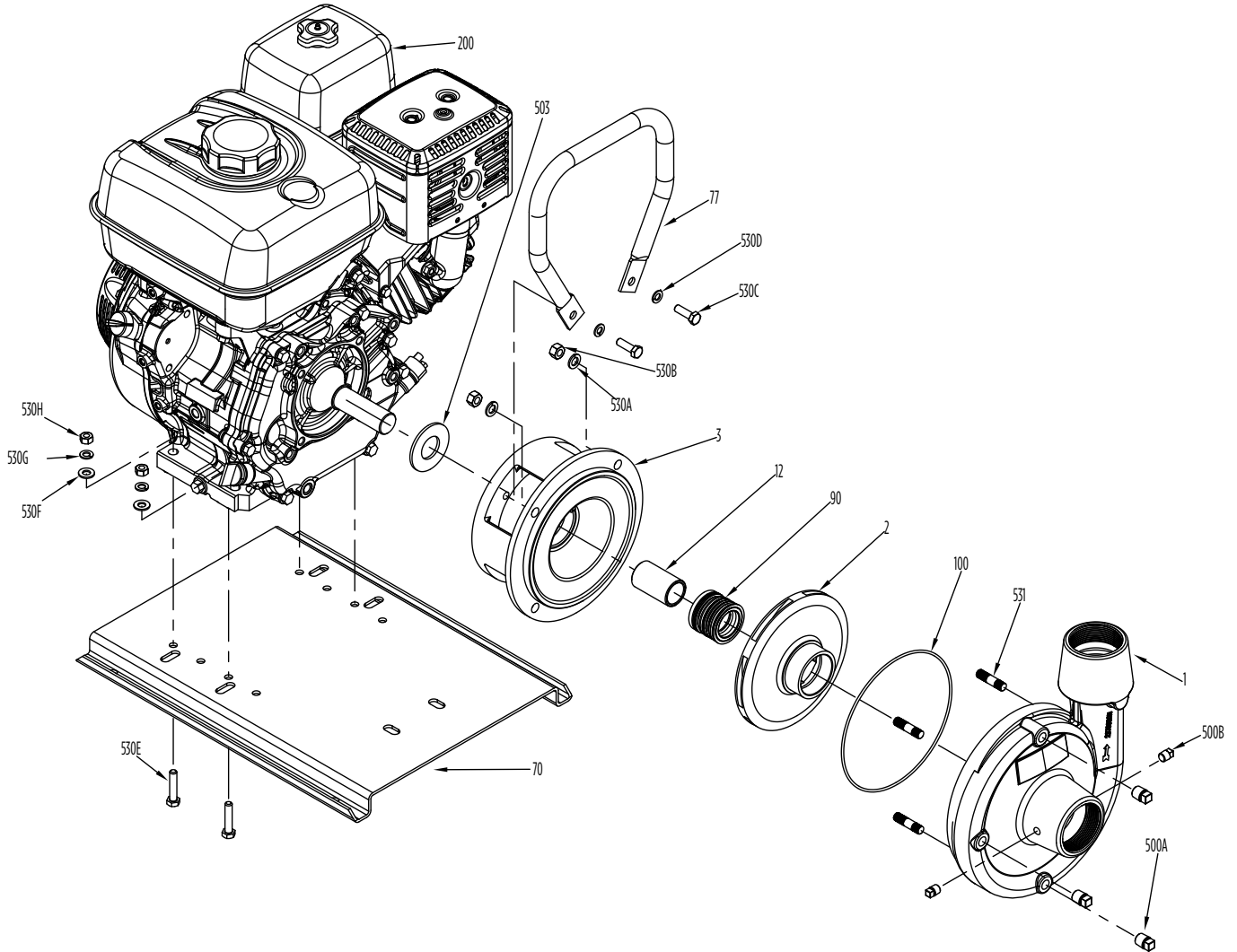
CENTRIFUGAL PUMPS

FACGF ENGINE DRIVEN CENTRIFUGAL



MATERIALS AND PARTS

FACGF-5/5H, 8/8H



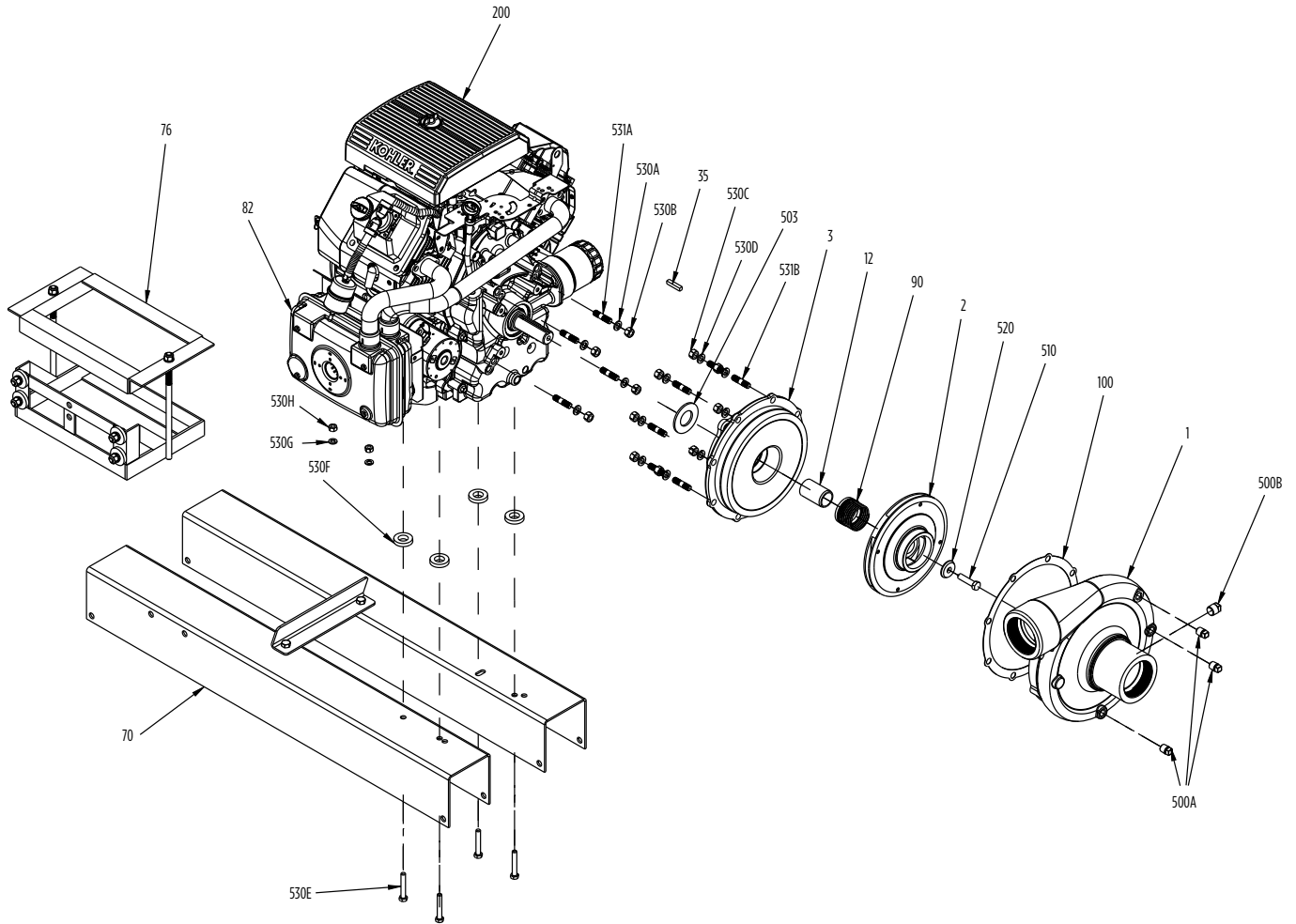
CENTRIFUGAL PUMPS

FACGF ENGINE DRIVEN CENTRIFUGAL



MATERIALS AND PARTS

FACGF-23K



CENTRIFUGAL PUMPS

FACGF ENGINE DRIVEN CENTRIFUGAL



MATERIALS AND PARTS

Fig. No.	Part Description	Part No.				Materials of Construction	
		FACGF-5	FACGF-5H	FACGF-8H	FACGF-23K		
1	Pump Case	305459001			305459003	Cast iron, ASTM-A48 CL30	
2	Impeller	305459004		305459005	305459007	Cast iron, ASTM-A48 CL30	
3	Motor Adapter	305459008		305459009	305459010	Cast iron, ASTM-A48 CL30	
12	Mech Seal Shaft Sleeve	305458010		305459011	305459013	416 stainless steel	
35	Shaft Key	N/A				305456005	300 series stainless steel
70	Base, Engine Frame	305459015		305459016	305459024	CRS (Low Carbon)	
76	Battery Holder Assembly	N/A			305457008	CRS (Low Carbon)	
77	Pump Handle	305459017		305459019	N/A	CRS (Low Carbon)	
90	Mechanical Shaft Seal	305463116			305463043	Carbon/Ceramic/ FKM/316SS	
100	Case O-Ring / Gasket	305463117			305463118	EPDM	
200	Engine	201915 B/S 205cc	202001 HONDA 160cc	202002 HONDA 270cc	106928101 KOHLER 725cc	Misc.	
500A	Pipe Plug 1/4" (4-Pack)	305463020				Cad-Plated Steel	
500B	Pipe Plug 1/8" / 3/8" (4-Pack)	305463009			305463175	Cad-Plated Steel	
503	Water Slinger	305458022		305456009	305459022	Neoprene	
510	Impeller Bolt	N/A			305463119	300 series stainless steel	
520	Impeller Washer	N/A			305455014	300 series stainless steel	
531	Threaded Stud - Volute (8-Pack)	305463114			N/A	18-8 stainless steel	
530A	Lockwasher - Volute (8-Pack)	305463135			N/A	Zinc-plated steel	
530B	Hex Nut - Volute (8-Pack)	305463033			N/A	Zinc-plated steel	
530C	Hex Bolt - Motor/Adapter (4 Req)	305463120		305463223	N/A	Zinc-plated steel	
530D	Collar Seal/Washer - Motor/Adapter	305463107		305463092	N/A	Nylon/Zinc-plated steel	
531	Threaded Stud - Motor/Adapter (4-Pack)	N/A			305463093	Zinc-plated steel	
530A	Lockwasher - Motor/Adapter (8-Pack)	N/A			305463135	Zinc-plated steel	
530B	Hex Nut - Motor/Adapter (8-Pack)	N/A			305463033	Zinc-plated steel	
530C	Hex Bolt - Volute (12-Pack)	N/A			305463010	Zinc-plated steel	
530E	Hex Bolt - Base (4-Pack)	305463122		305463122	305463111	Zinc-plated steel	
530F	Washer Base (4-Pack)	305463109				Zinc-plated steel	
530G	Lockwasher - Base (4-Pack)	305463092				Zinc-plated steel	
530H	Hex Nut - Base (4-Pack)	305463062				Zinc-plated steel	

Replacement Pump End Kits (No Engine)				
Shaft Type	Shaft Size Inch	Pump End Kit	PE Kit Description	Kit Wgt. Lbs.
Thrd	5/8	90260005	FACGF-5PEK	29
Thrd	1.0	90260008	FACGF-8PEK	46
Keyed	1.0	90260023	FACGF-23PEK	54

NOTE: All weight in pounds.

CENTRIFUGAL PUMPS

FNG - 23V ENGINE DRIVEN CENTRIFUGAL



EXPLODED PARTS

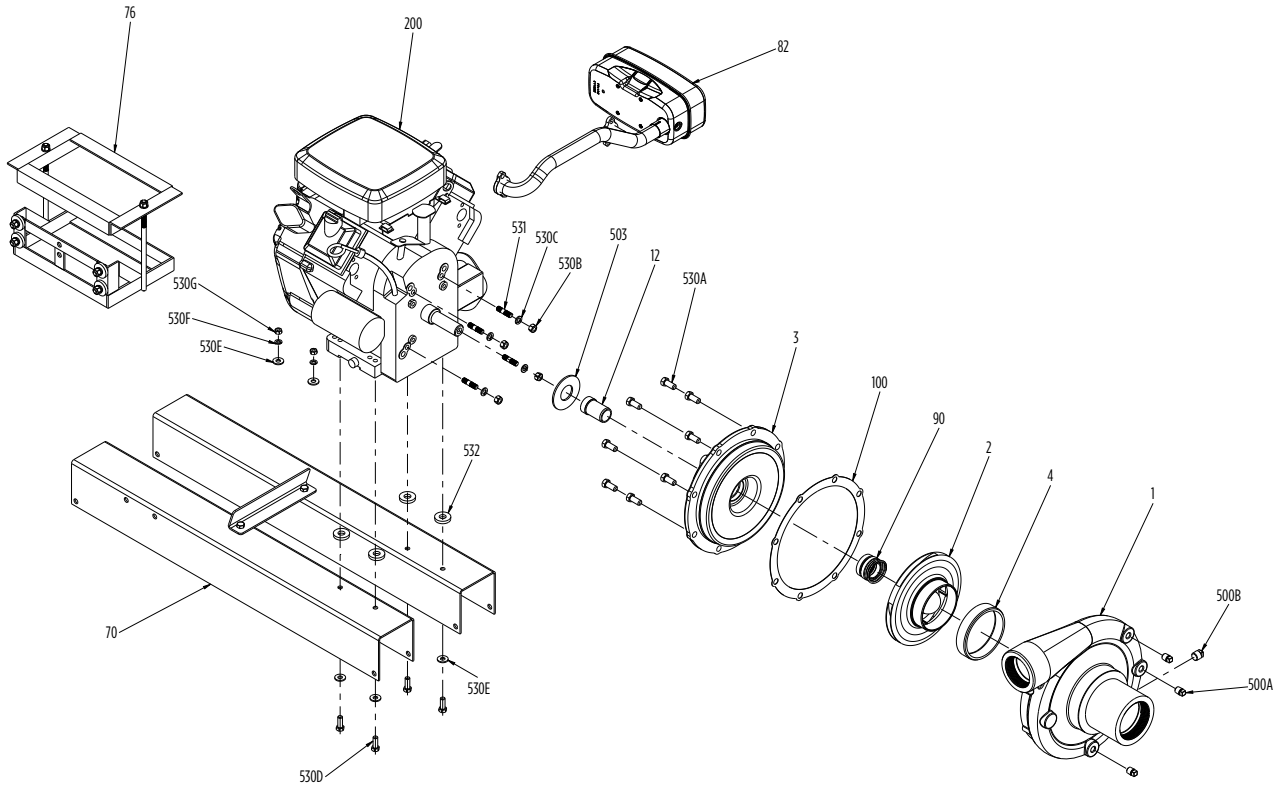


Fig. No.	Description	Part No.	Materials
1	Pump Case	305457001	Cast Iron, ASTM-A48 CL30
2	Impeller	305457012	Cast Iron, ASTM-A48 CL30
3	Motor Adapter	305457003	Cast Iron, ASTM-A48 CL30
4	Wear Ring (Suction)	305457004	SAE 660 Brass
12	Shaft Sleeve, Mechanical Seal	305457005	416 Stainless Steel
70	Base, Engine Frame	305459024	Various
76	Battery Holder Assembly	305457008	Various
82	Muffler	305457013	Various
90	Mechanical Shaft Seal	305457011	Carbon / Ceramic FKM / 316SS
100	Case Gasket	305457009	NA60
200	Engine B/S 623 cc	201942	Misc.
500A	Pipe Plug 1/4" (3 Req.) (4-Pack)	305463020	Cad-Plated Steel
500B	Pipe Plug 3/8" (1 Req.) (4-Pack)	305463175	Cad-Plated Steel
503	Water Slinger	305457010	Neoprene
530A	Hex Bolt - Volute (8 Req.) 7/16-14 (8-Pack)	305463183	Zinc-Plated Steel
530B	Hex Nut - Engine (4 Req.) (8-Pack)	305463033	Zinc-Plated Steel
530C	Lockwasher - Engine (4 Req.) (8-Pack)	305463135	Zinc-Plated Steel
530D	Hex Bolt - Motor Base (4 Req.) (4-Pack)	305463111	Zinc-Plated Steel
530E	Washer - Motor Base (4 Req.) (8-Pack)	305463247	Zinc-Plated Steel
530F	Lockwasher - Motor Base (4 Req.) (4-Pack)	305463092	Zinc-Plated Steel
530G	Hex Nut - Motor Base (4 Req.) (4-Pack)	305463062	Zinc-Plated Steel
531	Threaded Stud (4 Req.) (4-Pack)	305463093	Zinc-Plated Steel
532	Spacer (4 Req.) (4-Pack)	305463215	Cast Iron

Replacement Pump Ends (No Engine)

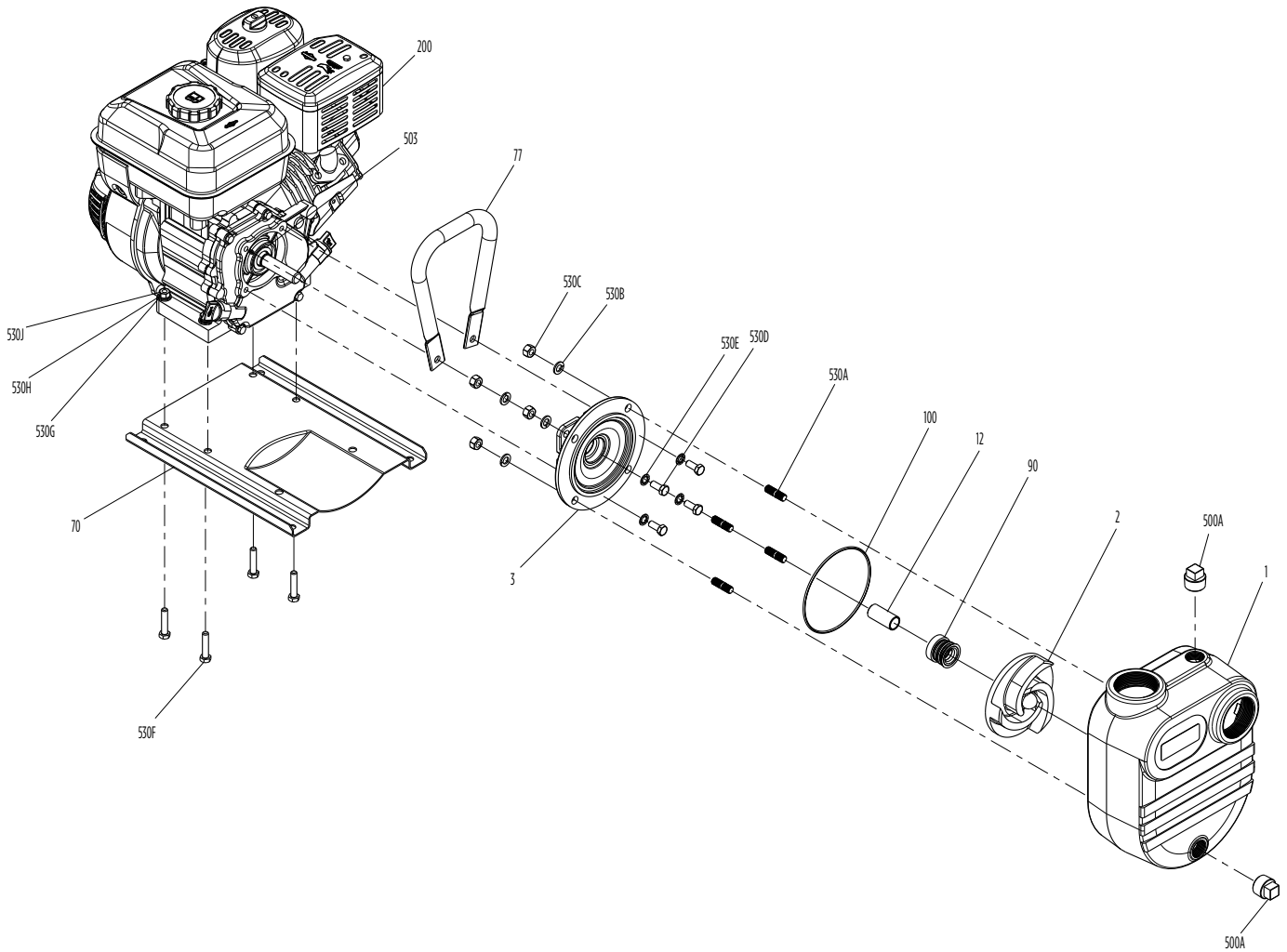
Shaft Type	Shaft Size Inch	Pump End Kit	PE Kit Description	Kit wt. lbs
Thrd	1.0	90265023	FNG-23PEK	70

CENTRIFUGAL PUMPS

FBSGF SELF-PRIMING ENGINE DRIVEN CENTRIFUGAL



MATERIALS AND PARTS



CENTRIFUGAL PUMPS

FBSGF SELF-PRIMING ENGINE DRIVEN CENTRIFUGAL



MATERIALS AND PARTS

Fig. No.	Part Description	Part No.					Materials of Construction
		FBSGF-8	FBSGF-8H	FBSGF-10	FBSGF10H	FBSGF-12H	
1	Pump Case	305460033			305460002		Cast iron, ASTM-A48 CL30
2	Impeller	305460003		305460004		305460005	Cast iron, ASTM-A48 CL30
3	Motor Adapter	305460006			305460008		Cast iron, ASTM-A48 CL30
12	Mech Seal Shaft Sleeve	305458010			305458011		416 stainless steel
70	Base, Engine Frame	305459015			305459016		CRS
77	Pump Handle	305460009		305460010	305460009	305460011	CRS
90	Mechanical Shaft Seal	305463116			305463043		Carbon/Ceramic/FKM/316SS
100*	O-Ring, Case	305463291			305463296		FKM
200	Engine	201950	202000	201915	202001	202002	Misc.
		B/S 127cc	HONDA 118cc	B/S 205cc	HONDA 160cc	HONDA 270cc	
500A	Pipe Plug	305463050				Zinc-plated steel	
503	Water Slinger	305460012		305458022		305456009	Neoprene
530A	Stud - Volute (4-Pack)	305463129				Zinc-plated steel	
530B	Lockwasher - Volute (8-Pack)	305463135				Zinc-plated steel	
530C	Hex Nut - Volute (8-Pack)	305463033				Zinc-plated steel	
530D	Hex Bolt - Bracket (4-Pack)	305463128			305463189		Zinc-plated steel
530E	Int. Lockwasher - Bracket (4-Pack)	305463127			305463190		Zinc-plated steel
530F	Hex Bolt - Base (4-Pack)	305463122				Zinc-plated steel	
530G	Flat Washer-Base (4-Pack)	305463109				Zinc-plated steel	
530H	Lockwasher-Base (4-Pack)	305463092				Zinc-plated steel	
530J	Hex Nut - Base (4-Pack)	305463062				Zinc-plated steel	
Not Shown	Spacer (4-Pack)	n/a				Cast iron, ASTM-A48 CL30	

*Pre May 2019

Fig. No.	Part Description	Part No.						Materials of Construction
		FBSGF-8	FBSGF-8H	FBSGF-10	FBSGF10H	FBSGF-12	FBSGF-12H	
1	Pump Case	305460001			305460002			Cast iron, ASTM-A48 CL30
3	Motor Adapter	305460007			305460008			Cast iron, ASTM-A48 CL30
100	O-Ring, Case	305463125			n/a			EPDM
100	Gasket, Case	n/a			305463126			Vegetable Fiber

Replacement Pump Ends (No Engine)

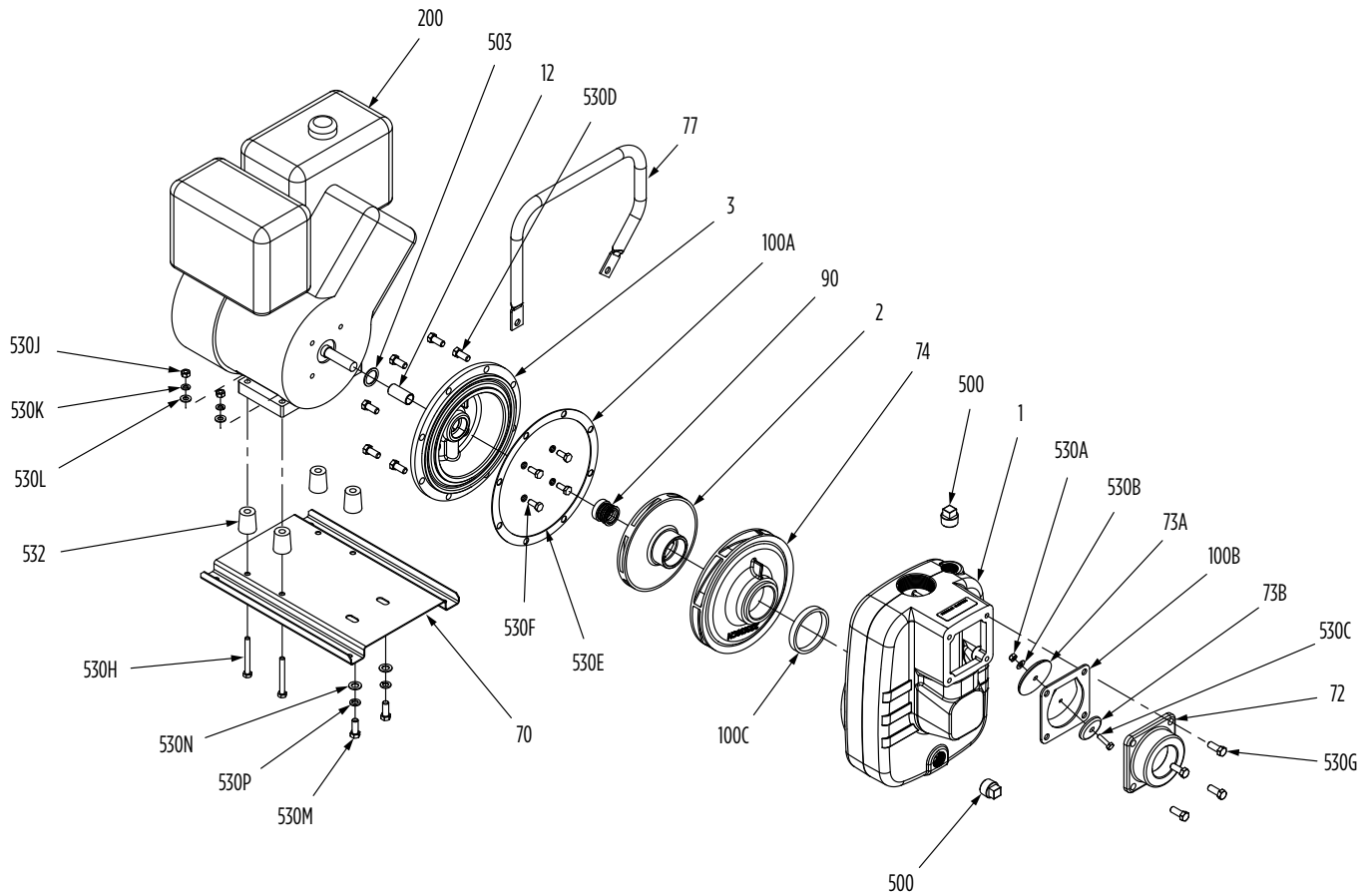
Shaft Type	Shaft Size Inch	Pump End Kit	PE Kit Description	Kit wt. lbs
THRD	5/8	90276008	FBSGF-8PEK	39
THRD	5/8	90276010	FBSGF-10PEK	35
THRD	1	90276012	FBSGF-12PEK	50

CENTRIFUGAL PUMPS

FNSGF SELF-PRIMING ENGINE DRIVEN CENTRIFUGAL



MATERIALS AND PARTS



CENTRIFUGAL PUMPS

FNSGF SELF-PRIMING ENGINE DRIVEN CENTRIFUGAL



MATERIALS AND PARTS

Fig. No.	Part Description	Part No.		Materials of Construction
		FNSGF-5H	FNSGF-8H	
1	Pump Case	305460013		Cast iron, ASTM-A48 CL30
2	Impeller	305459004	305460014	Cast iron, ASTM-A48 CL30
3	Motor Adapter	305460015	305460016	Cast iron, ASTM-A48 CL30
12	Mechanical Seal Shaft Sleeve	305458010	305459011	416 Stainless steel
70	Base, Engine Frame	305460017	305459016	CRS
72	Check Valve	305455010	305460018	Cast iron, ASTM-A48 CL30
73A	Top Weight, Check Valve	305455011		Cast iron, ASTM-A48 CL30
73B	Bottom Weight, Check Valve	305455012		Cast iron, ASTM-A48 CL30
74	Diffuser	305460019		Cast iron, ASTM-A48 CL30
77	Handle	305460020	305459018	CRS
90	Mechanical Shaft Seal	305463116	305463043	Carbon/Ceramic x FKM-SS
100A	Case Gasket	305463130		Neoprene
100B	Flapper Valve	305454043		Neoprene
100C	Square Ring, Volute	305463131		Nitrile
200	Engine	202001	202002	Misc.
		Honda 160cc	Honda 270cc	
500	Pipe Plug, 3/4" (2 req.)	305463050		CAD-plated steel
503	Water Slinger	305458022	305456009	Neoprene
530A	Nut, Flapper	305463082		300 Series stainless steel
530B	Washer, Flapper	305463084		300 Series stainless steel
530C	Bolt, Flapper	305463080		316 Stainless steel
530D	Hex Bolts, Volute (4 pack)	305463064		Zinc-plated steel
530E	Hex Bolt, Motor Adapter (4 pack)	305463120	305463214	Zinc-plated steel
530F	Collar Seal, Motor Adapter (4 pack)	305463107	-	Nylon
Not Shown	Lock Washer, Motor Adapter (4 pack)	-	305463010	Zinc-plated steel
530G	Hex Bolt, Check Valve (12 pack)	305463010		Zinc-plated steel
530H	Hex Bolt, Base (4 pack)	305463132	305463090	Zinc-plated steel
530J	Hex Nut, Base (4 pack)	305463062		Zinc-plated steel
530K	Lock Washer, Base (4 pack)	305463092		Zinc-plated steel
530L	Washer, Base (4 pack)	305463109		Zinc-plated steel
530M	Bolt, Base Volute (4 pack)	305463064		Zinc-plated steel
530N	Washer, Base Volute (4 pack)	305463064		Zinc-plated steel
530P	Lock Washer, Base Volute (6 pack)	305463137		Zinc-plated steel
532	Spacer (4 pack)	305463213	305463215	Cast iron

NOTE: Consult factory regarding parts support on diesel optioned units

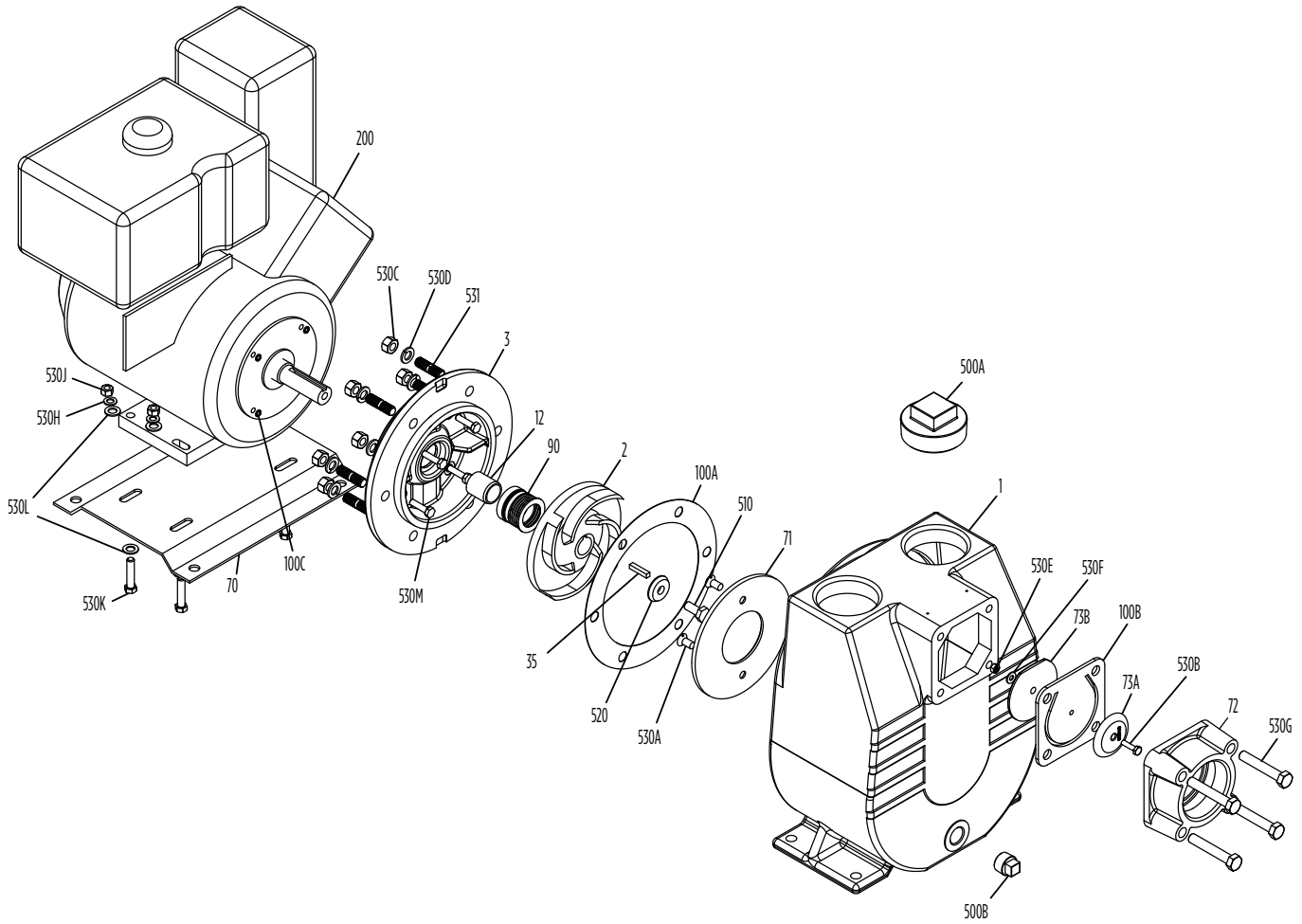
Replacement Pump End Kits (No Engine)				
Shaft Type	Shaft Size Inch	Pump End Kit	PE Kit Description	Kit wt. lbs
Thrd	5/8	90275005	FNSGF-5PEK	62
Thrd	1.0	90275008	FNSGF-8PEK	76

CENTRIFUGAL PUMPS

FMIG SELF-PRIMING ENGINE DRIVEN CENTRIFUGAL



MATERIALS AND PARTS



CENTRIFUGAL PUMPS

FMIG SELF-PRIMING ENGINE DRIVEN CENTRIFUGAL



MATERIALS AND PARTS

Fig. No.	Part Description	Part No.			Materials of Construction
		FMIG30-13H	FMIG40-18K	FMIG40-27K*	
1	Pump Case	30545002	305455003	305456015	Cast Iron, ASTM-A48 CL30
2	Impeller	305456013	305456014		Cast Iron, ASTM-A48 CL30
3	Motor Adapter	305456001	305456002		Cast Iron, ASTM-A48 CL30
12	Mechanical Seal Shaft Sleeve	305456003	305456004		416-Stainless steel
35	Impeller Shaft Key	305456005	305456006		316-Stainless steel
70	Base, Engine Frame	305456007	305455018 *		CRS
71	Wear Plate	305455008	305455009		CRS
72	Suction Flange	305454019	305454020		CRS
73A	Top Weight- Check Valve	305454022	305454023		Cast Iron, ASTM-A48 CL30
73B	Bottom Weight - Check Valve	305454025			Cast Iron, ASTM-A48 CL30
90	Mechanical Shaft Seal	305463043	305463044		Carbon/Ceramic/FKM/316SS
100A	Case Gasket	305454041	305454042		NA60
100B	Flapper Valve	305454044	305454045		Neoprene
100C	O-ring - Motor Bracket (4-Pack)	305463087	N/A		FKM
200	Engine	202258	202253	NLA	Misc.
		Honda 289cc	Kohler 624cc	Kohler 725cc	
500A	Pipe Plug 3" (3-Pack)	305463076			CAD-plated steel
500B	Pipe Plug 3/4" (3-Pack)	305463050			CAD-plated steel
503	Water Slinger	305456009	305456010		Neoprene
510	Impeller Hex Cap Screw	305463088	305463211		18-8 Stainless steel
520	Impeller Washer	305456011	305456012		300-Series stainless steel
531	Threaded Stud (6-Pack)	305463089			Zinc-plated steel
530A	Screw, Flat Head Slotted (6-Pack)	305463079			Zinc-plated steel
530B	Bolt, Flapper	305463080	305463058		300-Series stainless steel
530C	Hex Nuts - Adapter/Case (6-Pack)	305463059			Zinc-plated steel
530D	Lockwasher - Adapter/Case (6-Pack)	305463060			Zinc-plated steel
530E	Nut, Flapper	305463082	305463062		300-Series stainless steel
530F	Washer, Flapper	305463084	N/A		300-Series stainless steel
530G	Valve Hex Cap Screw (4-Pack)	305463085	305463086		Zinc-plated steel
530H	Lockwasher - Base/Engine (8-Pack)	305463032			Zinc-plated steel
530J	Hex Nut - Base/Engine (8-Pack)	305463033			Zinc-plated steel
530K	Hex Bolt - Base/Engine (4-Pack)	305463090	305463179		Zinc-plated steel
530L	Washer - Base/Engine (4-Pack)	305454046			Zinc-plated steel
530M	Hex Bolt - Motor/Adapter (4-Pack)	305463091	305463162		Zinc-plated steel
Not Shown	Lockwasher - Motor/Adapter	N/A	305463212		Zinc-plated steel
Not Shown	Flapper Valve Kit Includes 100B, 73A, 73B, 530B, 530E, (530F/FMIG-30)	305455021	305455022		Various

*Includes base, channels, and hardware

*Discontinued

Replacement Pump End Kits (No Engine)				
Shaft Type	Shaft Size Inch	Pump End Kit	PE Kit Description	Kit wt. lbs
Keyed	1.0	90285113	FMIG30-13PEK	150
Keyed	1 - 1/8	90285218	FMIG40-18PEK	220
Keyed	1 - 1/8	90285225	FMIG40-27PEK	220